

ProlabScientific

TWIRL'EM®

TWIRL'EM®
EC LO

SECURE-T®

FILTRA-BAG®

Sani-Stick

SANI SPONGE

Contact us for all your sampling needs.

2213 Le Chatelier Street | Laval | Quebec | Canada | H7L 5B3

Tel: 1.450.682.5118 | Fax: 1.450.682.6468 | info@prolabscientific.com | www.prolabscientific.com



PRODUCT CATALOG



LABPLAS PRODUCTS Serving your Industry

- FOOD
- AGRICULTURE
- ENVIRONMENT
- VETERINARY
- RESEARCH
- PHARMACEUTICAL



Labplas offers HIGH PRECISION SAMPLING INNOVATIONS to your industry. TWIRL'EM sampling bags provide a sterile, secure, contaminant-free pliant container that ensures dependable analysis results. Our different brands of products are an economical and efficient way to collect, contain and carry samples with confidence. Our sterile bags are used for environmental sampling, pharmaceutical research, quality assurance procedures (QA/QC), food industry applications and veterinary medicine.



Sampling in Food?

- Collection of samples requires sterile equipment and must be done meticulously to avoid samples contaminations;
- Labplas sterile sampling bags are easier to handle than vials;
- Labplas sterile sampling bags require very little storage space, are easy to transport and are single-use which saves a lot of time and energy;
- Several tests on food contact surfaces and non-food contact surfaces have to be conducted to determine whether the plant is contaminated or not.

Complies with regulatory and industry requirements:

FDA (US Food and Drug Administration)

HACCP (Hazard Analysis and Critical Control Point)

All sterile sampling bags are also R-NASE, D-NASE and Pyrogen free

TWIRL'EM®

TWIRL'EM Sterile sampling bags with built-in secure closure tabs are ideal for shipping and storage of all forms of sample material.

SECURE-T®

Our **SECURE-T** product is made to handle the most robust blending applications. The tear-off top ensures internal sterility right up until the time of use.

FILTRA-BAG®

Once at the laboratory, solid food samples must be separated and homogenized. Labplas **FILTRA-BAG** is a good tool in the homogenizer.

SANI-SPONGE

SANI-SPONGE Kits are offered to test the carcasses for salmonella, E. coli and other pathogens detection.

Sani-Stick®

Labplas offers the **SANI-STICK**, which allows easy sampling for hard-to-reach places. It also limits the handling of the sponge, since it's already on the stick.



Sampling in Agriculture?

- Contamination sources in grains are multiple, like wind, bird feces and the transport of fungus by the machinery;
- Soil testing is used to facilitate fertilizer composition and dosage selection used on land in both agricultural and horticultural industries.

Complies with regulatory and industry requirements:

USDA (US Department of Agriculture)

TWIRL'EM®

LARGE BAG FORMAT

Samples of 1 to 2,5 kg must be taken, so the bags have to be strong enough to support such weight. Labplas suggests a 4.0 mil.in thickness model for more safety.

TWIRL'EM®

TWIRLEM ECOLO

This polyethylene bag is biodegradable, and the decomposition only begins when the bag is in a proper degradation environment.



Sampling in Environment?

- Experts say that polyethylene can be used for any water sampling application and that the material is particularly used to sample water that will be tested for radioactivity;
- Collection of plant samples for plant disease identification.

Complies with regulatory and industry requirements:
EPA (US Environment Protection Agency)

TWIRL'EM®

WATER SAMPLING KIT

The thio tablets neutralize chlorine, iodine and other biocides or oxidizing agents found in water. They allow experts to find pathogens that couldn't be detected due to the presence of biocides and oxidizing agents.

STAND-UP

Labplas suggests to use their Stand-Up bag which is available in sizes of 4.5 x 9 in and 6 x 9 in. A gusset at the bottom of the bag allows it to stand up with only a little quantity of liquid inside.



Sampling in Veterinary?

- Identify potential risk for disease problems;
- Sampling for DNA tests particularly used for the identification of genetic differences between animal populations;
- Feed analysis can help you protect the health of your livestock and can assist in making sure your livestock and crops are safe for human consumption.

TWIRL'EM®

The bags are easier to carry than rigid containers because they take less storage space.

SANI SPONGE

SANI-SPONGE Kits are offered to test the presence of Salmonella in industrial hen houses.



Sampling in Research?

- To identify a bacterium;
- To mix ingredients together and be sure they won't be contaminated;
- To take an aliquot or archiving samples.

TWIRL'EM®

LARGE BAG FORMAT

The large format bags have a 4 mil.in thickness that guarantees safe transportation since the bags are strong enough to carry heavy pieces.

STAND-UP

Gusseted bags stand up by themselves without the necessity of a rack.



Sampling in Pharmaceutical?

- Contaminants and particules must be reduced to a minimum;
- Material used in a cleanroom must be clean and approved.

TWIRL'EM®

TWIRL'EM BAG FOR CLEAN ROOM (EX: EFL47012S)

Doubled packaging for internal and external sterility.

TWIRL'EM BAGS

Labplas can put 40 pouches of 25 sterile sampling bags in every package to minimize the amount of product exposed to the clean room environment at a time.

Product Characteristics

Product Advantages:

- Maximum bag mouth opening to facilitate insertion of sample;
- Lot number traceability for every product;
- Bags accommodate solid, semi-solid and liquid;
- Product meets USDA and ACIA industry standards and are made with FDA-compliant material.

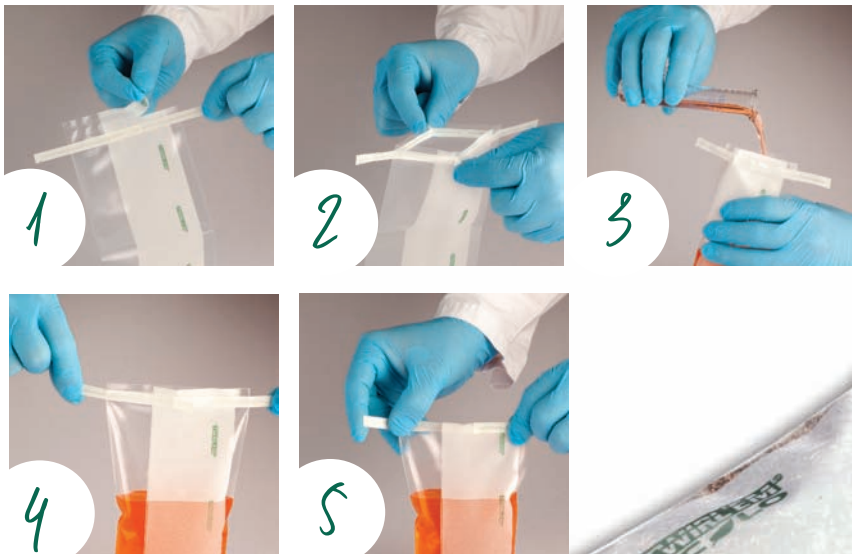
Sterility:

- Extrusion process at high temperatures between 220° C and 240° C guarantees internal sterility;
- Product sterility verified through testing of random samples;
- Sterility confirmation documentation available in every box;
- R-NASE, D-NASE, Pyrogen and BPA free.

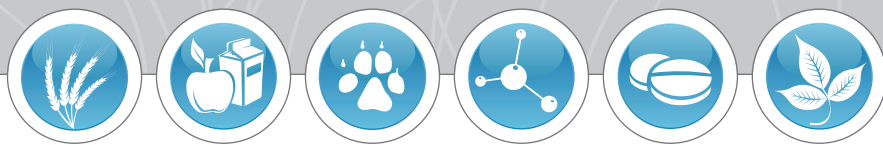


PRODUCT USAGE INSTRUCTIONS STEP BY STEP

- Step 1 Tear off the top of the bag along the perforations;
- Step 2 Use pull-tabs to pull open the bag;
- Step 3 Place sample in bag;
- Step 4 Hold bag by wire ends and twirl to close;
- Step 5 Fold both wire ends onto the bag to provide air-tight and leak-proof closure.



Twirl'em Ecolo



Safety Tabs - Clear - Closure with 2 round wires

Code	mils	mirc.	in x in	mm x mm	oz	ml	Packaging
EPL-3070E	2.5	63	3 x 7	76 x 178	4	130	Cs/1000 (2x500)
EPL-4590E	2.5	63	4.5 x 9	114 x 229	15	450	Cs/1000 (2x500)
EPL-5590E	3.0	76	5.5 x 9	140 x 229	22	650	Cs/1000 (2x500)
EPL45590E	4.0	101	5,5 x 9	140 x 229	22	650	Cs/1000 (2x500)
EPL-5515E	3.0	76	5,5 x 15	140 x 382	50	1500	Cs/1000 (2x500)
EPL-7012E	3.0	76	7 x 12	178 x 305	55	1650	Cs/1000 (4x250)
EPL47012E	4.0	101	7 x 12	178 x 305	55	1650	Cs/1000 (4x250)
EPL-7015E	3.0	76	7 x 15	178 x 382	85	2500	Cs/1000 (4x250)

Safety Tabs - Printed - Closure with 2 round wires

Code	mils	mirc.	in x in	mm x mm	oz	ml	Packaging
EPR-3050E	2.5	63	3 x 5	76 x 127	2	60	Cs/1000 (2x500)
EPR-3070E	2.5	63	3 x 7	76 x 178	4	130	Cs/1000 (2x500)
EPR-4590E	2.5	63	4.5 x 9	114 x 229	15	450	Cs/1000 (2x500)
EPR-5590E	3.0	76	5.5 x 9	140 x 229	22	650	Cs/1000 (2x500)
EPR45590E	4.0	101	5.5 x 9	140 x 229	22	650	Cs/1000 (2x500)
EPR-7012E	3.0	76	7 x 12	178 x 305	55	1650	Cs/1000 (4x250)
EPR47012E	4.0	101	7 x 12	178 x 305	55	1650	Cs/1000 (4x250)

Safety Tabs - Clear - Closure with 1 round wire & 1 flat wire

Code	mils	mirc.	in x in	mm x mm	oz	ml	Packaging
EFL-3070E	2.5	63	3 x 7	76 x 178	4	130	Cs/1000 (2x500)
EFL-4590E	2.5	63	4,5 x 9	114 x 229	115	450	Cs/1000 (2x500)
EFL-5590E	3.0	76	5,5 x 9	140 x 229	22	650	Cs/1000 (2x500)
EFL-5512E	3.0	76	5.5 x 12	140 x 305	36	1080	Cs/1000 (2x500)
EFL-7012E	3.0	76	7 x 12	178 x 305	55	1650	Cs/1000 (4x250)
EFL47012E	4.0	101	7 x 12	178 x 305	55	1650	Cs/1000 (4x250)
EFL-1012E	4.0	101	10 x 12	254 x 305	76	2250	Cs/1000 (4x250)
EFL-1015E	4.0	101	10 x 15	254 x 382	135	4000	Cs/1000 (4x250)

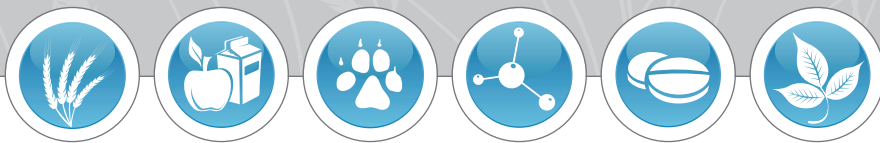
Safety Tabs - Printed - Closure with 1 round wire & 1 flat wire

Code	mils	mirc.	in x in	mm x mm	oz	ml	Packaging
EFR-3070E	2.5	63	3 x 7	76 x 178	4	130	Cs/1000 (2x500)
EFR-4590E	2.5	63	4.5 x 9	114 x 229	15	450	Cs/1000 (2x500)
EFR-5590E	3.0	76	5,5 x 9	140 x 229	22	650	Cs/1000 (2x500)
EFR-7012E	3.0	76	7 x 12	178 x 305	55	1650	Cs/1000 (4x250)
EFR47012E	4.0	101	7 x 12	178 x 305	55	1650	Cs/1000 (4x250)
EFR-1012E	4.0	101	10 x 12	254 x 305	76	2250	Cs/1000 (4x250)
EFR-1015E	4.0	101	10 x 15	254 x 382	135	4000	Cs/1000 (4x250)

THE ONES WITH THE GREEN COLORED CLOSURE SYSTEM!

Labplas offers the first environmentally friendly sterile sampling bag on the market. The ECOLO products retain all the characteristics of the TWIRLEM line while being made of entirely biodegradable LDPE tubing. It is an economical and timesaving green alternative to rigid containers.





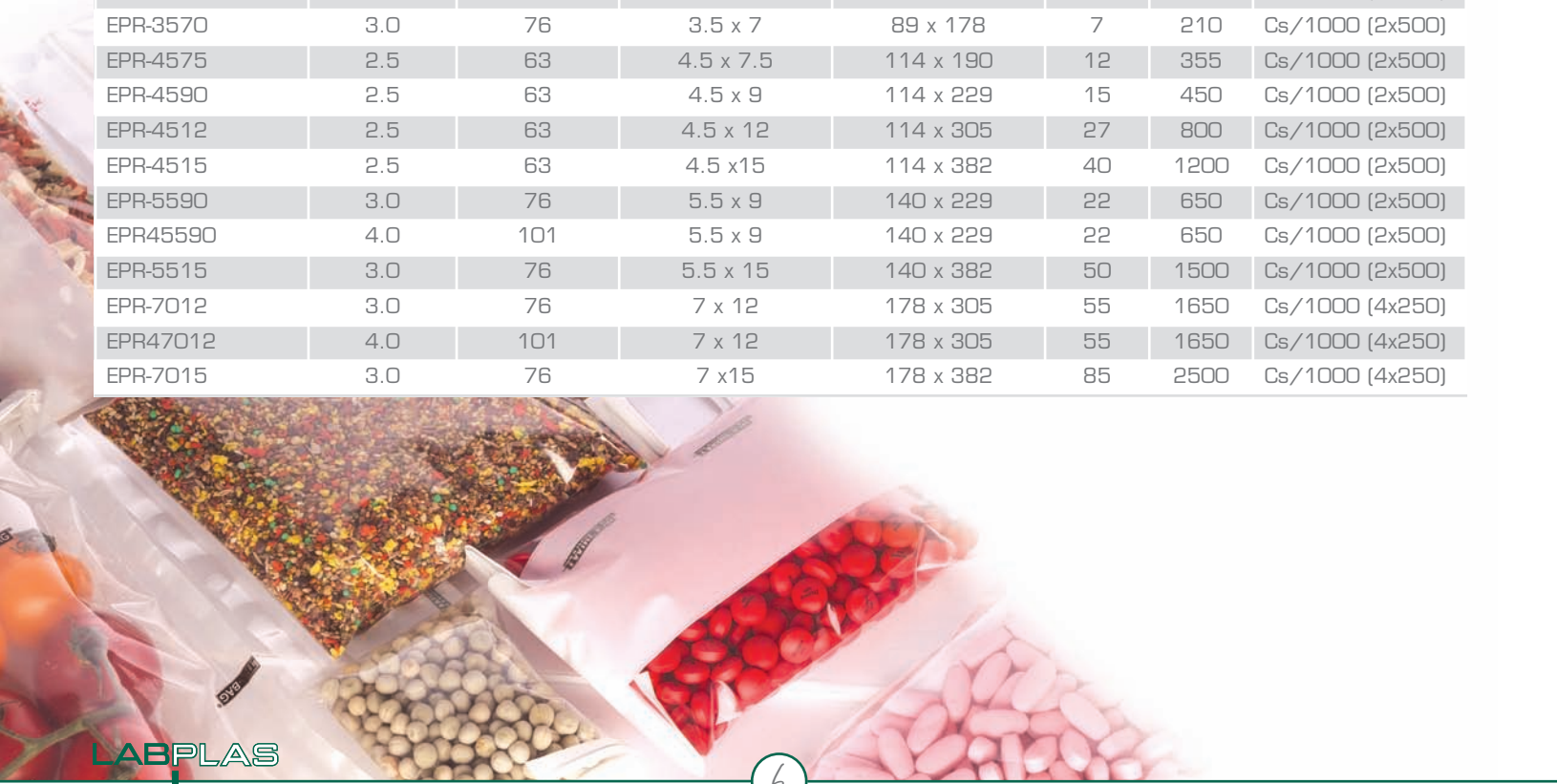
Twirl'em Sterile Sampling Bag

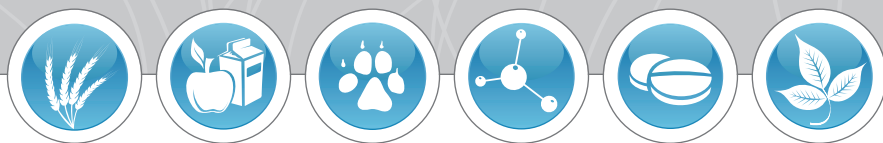
Safety Tabs - Clear - Closure with 2 round wires

Code	mils	micr.	in x in	mm x mm	oz	ml	Packaging
EPL-3050	2.5	63	3 x 5	76 x 127	2	60	Cs/1000 (2x500)
EPL-3070	2.5	63	3 x 7	76 x 178	4	130	Cs/1000 (2x500)
EPL-3570	3.0	76	3.5 x 7	89 x 178	7	210	Cs/1000 (2x500)
EPL-4575	2.5	63	4.5 x 7.5	114 x 190	12	355	Cs/1000 (2x500)
EPL-4590	2.5	63	4.5 x 9	114 x 229	15	450	Cs/1000 (2x500)
EPL-4512	2.5	63	4.5 x 12	114 x 305	27	800	Cs/1000 (2x500)
EPL-4515	2.5	63	4.5 x 15	114 x 382	40	1200	Cs/1000 (2x500)
EPL-5590	3.0	76	5.5 x 9	140 x 229	22	650	Cs/1000 (2x500)
EPL45590	4.0	101	5.5 x 9	140 x 229	22	650	Cs/1000 (2x500)
EPL-5515	3.0	76	5.5 x 15	140 x 382	50	1500	Cs/1000 (2x500)
EPL-7012	3.0	76	7 x 12	178 x 305	55	1650	Cs/1000 (4x250)
EPL47012	4.0	101	7 x 12	178 x 305	55	1650	Cs/1000 (4x250)
EPL-7015	3.0	76	7 x 15	178 x 382	85	2500	Cs/1000 (4x250)

Safety Tabs - Printed - Closure with 2 round wires

Code	mils	micr.	in x in	mm x mm	oz	ml	Packaging
EPR-3050	2.5	63	3 x 5	76 x 127	2	60	Cs/1000 (2x500)
EPR-3070	2.5	63	3 x 7	76 x 178	4	130	Cs/1000 (2x500)
EPR-3570	3.0	76	3.5 x 7	89 x 178	7	210	Cs/1000 (2x500)
EPR-4575	2.5	63	4.5 x 7.5	114 x 190	12	355	Cs/1000 (2x500)
EPR-4590	2.5	63	4.5 x 9	114 x 229	15	450	Cs/1000 (2x500)
EPR-4512	2.5	63	4.5 x 12	114 x 305	27	800	Cs/1000 (2x500)
EPR-4515	2.5	63	4.5 x 15	114 x 382	40	1200	Cs/1000 (2x500)
EPR-5590	3.0	76	5.5 x 9	140 x 229	22	650	Cs/1000 (2x500)
EPR45590	4.0	101	5.5 x 9	140 x 229	22	650	Cs/1000 (2x500)
EPR-5515	3.0	76	5.5 x 15	140 x 382	50	1500	Cs/1000 (2x500)
EPR-7012	3.0	76	7 x 12	178 x 305	55	1650	Cs/1000 (4x250)
EPR47012	4.0	101	7 x 12	178 x 305	55	1650	Cs/1000 (4x250)
EPR-7015	3.0	76	7 x 15	178 x 382	85	2500	Cs/1000 (4x250)





Twirl'em

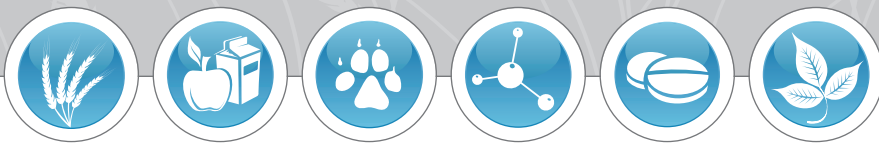
Safety Tabs - Clear - Closure with 1 round wire & 1 flat wire

Code	mils	micr.	in x in	mm x mm	oz	ml	Packaging
EFL-3070	2.5	63	3 x 7	76 x 178	4	130	Cs/1000 (2x500)
EFL-4590	2.5	63	4.5 x 9	114 x 229	15	450	Cs/1000 (2x500)
EFL-5590	3.0	76	5.5 x 9	140 x 229	22	650	Cs/1000 (2x500)
EFL-5512	3.0	76	5.5 x 12	140 x 305	36	1080	Cs/1000 (2x500)
EFL-7012	3.0	76	7 x 12	178 x 305	55	1650	Cs/1000 (4x250)
EFL47012	4.0	101	7 x 12	178 x 305	55	1650	Cs/1000 (4x250)
EFL-1012	4.0	101	10 x 12	254 x 305	76	2250	Cs/1000 (4x250)
EFL-1015	4.0	101	10 x 15	254 x 382	135	4000	Cs/1000 (4x250)

Safety Tabs - Printed - Closure with 1 round wire & 1 flat wire

Code	mils	micr.	in x in	mm x mm	oz	ml	Packaging
EFR-3070	2.5	63	3 x 7	76 x 178	4	130	Cs/1000 (2x500)
EFR-4590	2.5	63	4.5 x 9	114 x 229	15	450	Cs/1000 (2x500)
EFR-5590	3.0	76	5.5 x 9	140 x 229	22	650	Cs/1000 (2x500)
EFR-5512	3.0	76	5.5 x 12	140 x 305	36	1080	Cs/1000 (2x500)
EFR-7012	3.0	76	7 x 12	178 x 305	55	1650	Cs/1000 (4x250)
EFR47012	4.0	101	7 x 12	178 x 305	55	1650	Cs/1000 (4x250)
EFR-1012	4.0	101	10 x 12	254 x 305	76	2250	Cs/1000 (4x250)
EFR-1015	4.0	101	10 x 15	254 x 382	135	4000	Cs/1000 (4x250)





Twirl'em

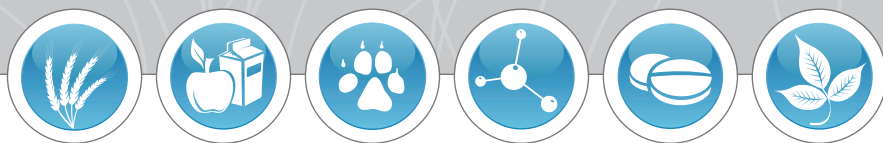
Regular Tabs - Clear - Closure with 2 round wires

Code	mils	micr.	in x in	mm x mm	oz	ml	Packaging
BPL-4575	2.5	63	4.5 x 7.5	114 x 190	12	355	Cs/1000 (2x500)
BPL-4590	2.5	63	4.5 x 9	114 x 229	15	450	Cs/1000 (2x500)
BPL-4512	2.5	63	4.5 x 12	114 x 305	27	800	Cs/1000 (2x500)
BPL-4515	2.5	63	4.5 x 15	114 x 382	40	1200	Cs/1000 (2x500)
BPL-5590	3.0	76	5.5 x 9	140 x 229	22	650	Cs/1000 (2x500)
BPL-5512	3.0	76	5.5 x 12	140 x 305	36	1080	Cs/1000 (2x500)
BPL-5515	3.0	76	5.5 x 15	140 x 382	50	1500	Cs/1000 (2x500)
BPL-7012	3.0	76	7 x 12	178 x 305	55	1650	Cs/1000 (4x250)

Regular Tabs - Printed - Closure with 2 round wires

Code	mils	micr.	in x in	mm x mm	oz	ml	Packaging
BPR-4590	2.5	63	4.5 x 9	114 x 229	15	450	Cs/1000 (2x500)
BPR-4512	2.5	63	4.5 x 12	114 x 305	27	800	Cs/1000 (2x500)
BPR-4515	2.5	63	4.5 x 15	114 x 382	40	1200	Cs/1000 (2x500)
BPR-5590	3.0	76	5.5 x 9	140 x 229	22	650	Cs/1000 (2x500)
BPR-5512	3.0	76	5.5 x 12	140 x 305	36	1080	Cs/1000 (2x500)
BPR-5515	3.0	76	5.5 x 15	140 x 382	50	1500	Cs/1000 (2x500)
BPR-7012	3.0	76	7 x 12	178 x 305	55	1650	Cs/1000 (4x250)





Twirl'em

Regular Tabs - Clear - Closure with 1 round wire & 1 flat wire

Code	mils	micr.	in x in	mm x mm	oz	ml	Packaging
BFL-4590	2.5	63	4.5 x 9	114 x 229	15	450	Cs/1000 (2x500)
BFL-4512	2.5	63	4.5 x 12	114 x 305	27	800	Cs/1000 (2x500)
BFL-4515	2.5	63	4.5 x 15	114 x 382	40	1200	Cs/1000 (2x500)
BFL-5590	3.0	76	5.5 x 9	140 x 229	22	650	Cs/1000 (2x500)
BFL45590	4.0	101	5.5 x 9	140 x 229	22	650	Cs/1000 (2x500)
BFL-5512	3.0	76	5.5 x 12	140 x 305	36	1080	Cs/1000 (2x500)
BFL-5515	3.0	76	5.5 x 15	140 x 382	50	1500	Cs/1000 (2x500)
BFL-7012	3.0	76	7 x 12	178 x 305	55	1650	Cs/1000 (4x250)

Regular Tabs - Printed - Closure with 1 round wire & 1 flat wire

Code	mils	micr.	in x in	mm x mm	oz	ml	Packaging
BFR-4590	2.5	63	4.5 x 9	114 x 229	15	450	Cs/1000 (2x500)
BFR-4512	2.5	63	4.5 x 12	114 x 305	27	800	Cs/1000 (2x500)
BFR-4515	2.5	63	4.5 x 15	114 x 382	40	1200	Cs/1000 (2x500)
BFR-5590	3.0	76	5.5 x 9	140 x 229	22	650	Cs/1000 (2x500)
BFR-5512	3.0	76	5.5 x 12	140 x 305	36	1080	Cs/1000 (2x500)
BFR-5515	3.0	76	5.5 x 15	140 x 382	50	1500	Cs/1000 (2x500)
BFR-7012	3.0	76	7 x 12	178 x 305	55	1650	Cs/1000 (4x250)



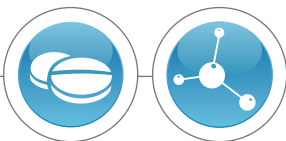


Opaque Twirl'em

Safety Tabs - Opaque - Printed - Closure with 2 round wires

Code	mils	mirc.	in x in	mm x mm	oz	ml	Packaging
EPN-4590	2.5	63	4.5 x 9	114 x 229	15	450	Cs/1000 (2x500)
EPN-4512	2.5	63	4.5 x 12	114 x 305	30	900	Cs/1000 (2x500)
EPN-4515	2.5	63	4.5 x 15	114 x 382	40	1200	Cs/1000 (2x500)

The Opaque TWIRL'EM is used by the food, research, pharmaceutical and environmental industries. The black resin is a total light barrier that protects photosensitive substances, such as vitamins, chemicals and pharmaceuticals, food supplements, plant extracts or biological tissues.



Clean Room

DOUBLE POUCH FOR CLEAN ROOM APPLICATIONS

Safety Tabs - Clear - Closure with 2 round wires

Code	mils	mirc.	in x in	mm x mm	oz	ml	Packaging
EPL-4512S	2.5	63	4.5 x 12	114 x 305	27	800	Cs/1000 (40X25)
EPL-5590S	3.0	76	5.5 x 9	140 x 229	22	650	Cs/1000 (40X25)
EPL-5515S	3.0	76	5.5 x 12	140 x 382	50	1500	Cs/1000 (40X25)
EPL-7012S	3.0	76	7 x 12	178 x 305	55	1650	Cs/1000 (40X25)

Safety Tabs - Printed - Closure with 2 round wires

Code	mils	mirc.	in x in	mm x mm	oz	ml	Packaging
EPR-4512S	2.5	63	4.5 x 9	114 x 305	27	800	Cs/1000 (40X25)
EPR-5590S	3.0	76	5.5 x 9	140 x 229	22	650	Cs/1000 (40X25)
EPR-5515S	3.0	76	5.5 x 15	140 x 382	50	1500	Cs/1000 (40X25)
EPR-7012S	3.0	76	7 x 12	178 x 305	55	1650	Cs/1000 (40X25)



Clean Room

Safety tabs - Clear - Closure with 1 round wire & 1 flat wire

Code	mils	micr.	in x in	mm x mm	oz	ml	Packaging
EFL-5590S	3.0	63	5.5 x 9	140 x 229	22	650	Cs/1000 (40X25)
EFL45590S	4.0	101	5.5 x 9	140 x 229	22	650	Cs/1000 (40X25)
EFL-5512S	3.0	76	5.5 x 12	140 x 305	36	1080	Cs/1000 (40X25)
EFL-7012S	3.0	76	7 x 12	178 x 305	55	1650	Cs/1000 (40X25)
EFL47012S	4.0	101	7 x 12	178 x 305	55	1650	Cs/1000 (40X25)
EFL-1012S	4.0	101	10 x 12	254 x 305	76	2250	Cs/1000 (40X25)
EFL-1015S	4.0	101	10 x 15	254 x 382	135	4000	Cs/1000 (40X25)

Safety tabs - Printed - Closure with 1 round wire & 1 flat wire

Code	mils	micr.	in x in	mm x mm	oz	ml	Packaging
EFR-5590S	3.0	76	5.5 x 9	140 x 229	22	650	Cs/1000 (40X25)
EFR45590S	4.0	101	5.5 x 9	140 x 229	22	650	Cs/1000 (40X25)
EFR-5512S	3.0	76	5.5 x 12	140 x 305	36	1080	Cs/1000 (40X25)
EFR-7012S	3.0	76	7 x 12	178 x 305	55	1650	Cs/1000 (40X25)
EFR47012S	4.0	101	7 x 12	178 x 305	55	1650	Cs/1000 (40X25)
EFR-1012S	4.0	101	10 x 12	254 x 305	76	2250	Cs/1000 (40X25)
EFR-1015S	4.0	101	10 x 15	254 x 382	135	4000	Cs/1000 (40X25)



With the TWIRL'EM clean room application packaging, you can bring your sterile sampling bags into your clean room without any worries about contaminations. The bags are double pouched in packs of 25 so you can remove the outer bag before entering the clean room which minimize the number of bags exposed at a time. The bags are sterile inside and out.

Regulations:
 NF ISO 14644-1
 ISO 14698
 ISO 14644



Twirl'em Large Format

Safety Tabs - Clear - Closure with 2 flat wires

Code	mils	mirc.	in x in	mm x mm	oz	ml	Packaging
EDL41212	4.0	101	12 x 12	305 x 305	102	3 L	Cs/250
EDL41214	4.0	101	12 x 14	305 x 356	145	4.25 L	Cs/250
EDL41216	4.0	101	12 x 16	305 x 406	185	5.5 L	Cs/250
EDL41218	4.0	101	12 x 18	305 x 457	228	6.75 L	Cs/250
EDL41220	4.0	101	12 x 20	305 x 508	270	8 L	Cs/250
EDL41224	4.0	101	12 x 24	305 x 610	355	10.5 L	Cs/250
EDL41228	4.0	101	12 x 28	305 x 711	440	13 L	Cs/250

Regular Tabs - Clear - Closure with 2 flat wires

Code	mils	mirc.	in x in	mm x mm	oz	ml	Packaging
BDL41520	4.0	101	15 x 20	382 x 508	405	12 L	Cs/250
BDL41524	4.0	101	15 x 24	382 x 610	507	15 L	Cs/250

Safety Tabs - Printed - Closure with 2 flat wires

Code	mils	mirc.	in x in	mm x mm	oz	ml	Packaging
EDR41212	4.0	101	12 x 12	305 x 305	102	3 L	Cs/250
EDR41214	4.0	101	12 x 14	305 x 356	145	4.25 L	Cs/250
EDR41216	4.0	101	12 x 16	305 x 406	185	5.5 L	Cs/250
EDR41218	4.0	101	12 x 18	305 x 457	228	6.75 L	Cs/250
EDR41220	4.0	101	12 x 20	305 x 508	270	8 L	Cs/250
EDR41224	4.0	101	12 x 24	305 x 610	355	10.5 L	Cs/250
EDR41228	4.0	101	12 x 28	305 x 711	440	13 L	Cs/250

Regular Tabs - Printed - Closure with 2 flat wires

Code	mils	mirc.	in x in	mm x mm	oz	ml	Packaging
BDR41520	4.0	101	15 x 20	382 x 508	405	12 L	Cs/250
BDR41524	4.0	101	15 x 24	382 x 610	507	15 L	Cs/250

Tear-off opening - Clear

Code	mils	mirc.	in x in	mm x mm	oz	ml	Packaging
SCL21520	2.0	51	15 x 20	381 x 508	405	12 L	Cs/500 (2x250)
SCL22424	2.0	51	24 x 24	610 x 610	1600	48 L	Cs/500 (2x250)
SCL33030	3.0	76	30 x 30	760 x 760	1833	55 L	Cs/250
SCL33037	3.0	76	30 x 37	760 x 940	2000	61 L	Cs/250
SCL43048	4.0	101	30 x 48	760 x 1219	2600	81 L	Cs/125



Stand-Up Bags

Safety Tabs - Stand-up bag- Printed - Closure with 2 round wires

Code	mils	micr.	in x in	mm x mm	oz	ml	Packaging
EPS-4590	4.0	101	4.5 x 9	114 x 229	18	400	Cs/1000 (2x500)
EPS-6090	4.0	101	6 x 9	150 x 229	24	710	Cs/1000 (2x500)

The TWIRL'EM STAND-UP bags are meant for jobs where 2 hands are required. Our gusseted bags stand up by themselves without the necessity of a rack or stand. The combination of the flat bottom and the wire closure offers a bag that stands by itself and remains open until the sample has been poured in.



Water Sampling Kit

Water Sampling Kits - Printed

Code	Description	mils	micr.	in x in	mm x mm	oz	ml	Packaging
KWS-21100	1 x 10 mg Sodium Thiosulfate tablet	2.5	63	3 x 7	76 x 178	4	100	Pk/100
KWS-22200	1 x 30 mg Sodium Thiosulfate tablet	2.5	63	4.5 x 9	114 x 229	10	300	Pk/100

The WATER SAMPLING Kits are designed to collect, carry and contain chlorinated water samples in aseptic conditions and are an economical and efficient alternative to rigid sampling containers. Our sterile kits contain a non-toxic, neutralizing tablet containing 10 mg or 30 mg of active sodium thiosulfate and are UPA-approved for drinking water analysis.





Sani-Sponge

SANI-SPONGE Kit with Dry Sponge

Code	Description	mils	micr.	in x in	mm x mm	oz	ml	Packaging
KSS-61100	Dehydrated sponge	2.5	63	4.5 x 9	114 x 229	15	450	Cs/400 (4x100)
KSS-61105	Dehydrated sponge with gloves	2.5	63	4.5 x 9	114 x 229	15	450	Cs/400 (4x100)

SANI-SPONGE Kit with Wet Sponge

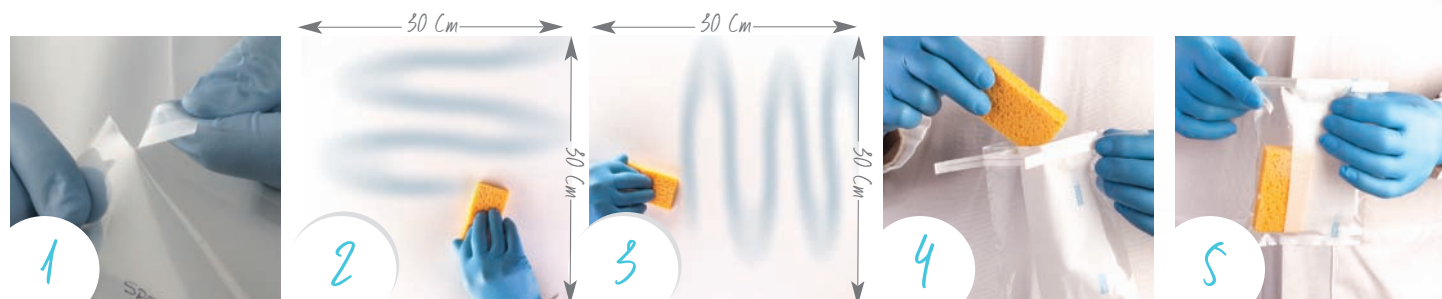
Code	Description	mils	micr.	in x in	mm x mm	oz	ml	Packaging
KSS-61110-DE	DE-Neutralizing buffer	2.5	63	4.5 x 9	114 x 229	15	450	Cs/100 (5x20)
KSS-61110-LT	Lethen broth	2.5	63	4.5 x 9	114 x 229	15	450	Cs/100 (5x20)
KSS-61110-NE	Neutralizing buffer	2.5	63	4.5 x 9	114 x 229	15	450	Cs/100 (5x20)
KSS-61110-PW	Buffered peptone water	2.5	63	4.5 x 9	114 x 229	15	450	Cs/100 (5x20)
KSS-61115-DE	DE-Neutralizing buffer with gloves	2.5	63	4.5 x 9	114 x 229	15	450	Cs/100 (5x20)
KSS-61115-LT	Lethen broth with gloves	2.5	63	4.5 x 9	114 x 229	15	450	Cs/100 (5x20)
KSS-61115-NE	Neutralizing buffer with gloves	2.5	63	4.5 x 9	114 x 229	15	450	Cs/100 (5x20)
KSS-61115-PW	Buffered peptone water with gloves	2.5	63	4.5 x 9	114 x 229	15	450	Cs/100 (5x20)

The SANI-SPONGE kit is designed to collect samples to detect the presence of microbiological contaminations such as *Listeria*, *Salmonella*, *E. coli*, and other food born pathogens on almost any surface. These kits are widely used in the food industry application, quality assurance procedures (QA/QC) and in the veterinary sector. The SANI-SPONGE kit is convenient, easy to use and helps eliminate several time-consuming steps. All sponge kits come in a 4.5 in x 9 in. TWIRLEM sterile bag.

SANI-SPONGE sampling kits are produced in accordance with HACCP, USDA, ACIA and CFIA requirements

PRODUCT USAGE INSTRUCTIONS STEP BY STEP

- Step 1 Remove the tear-off strip and carefully take the sponge out (sterile gloves are recommended). Do not touch the inside of the bag;
- Step 2 Swab the sampling surface (suggested 30 x 30 cm area/12"x12") with the sponge in a vertical (up and down) motion;
- Step 3 Turn the sponge over and swab the sample area again, this time in a horizontal (left to right) motion;
- Step 4 Return the sponge in the sterile sampling bag with care;
- Step 5 Identify the sample on the write-on area with a permanent marker.





Sani-Stick

SANI-STICK Kit with Wet Sponge

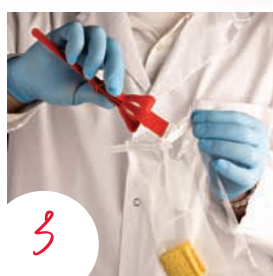
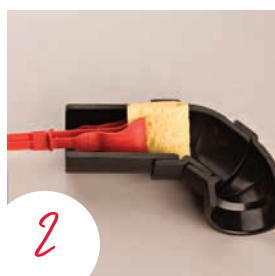
Code	Description	mils	micr.	in x in	mm x mm	oz	ml	Packaging
KSS-61310-DE	Sponge on handle with DE-Neutralizing buffer	3.0	76	5.5 x 12	140 x 305	36	1080	Cs/100 (10x10)
KSS-61310-LT	Sponge on handle with Lethen broth	3.0	76	5.5 x 12	140 x 305	36	1080	Cs/100 (10x10)
KSS-61310-NE	Sponge on handle with Neutralizing buffer	3.0	76	5.5 x 12	140 x 305	36	1080	Cs/100 (10x10)
KSS-61310-PW	Sponge on handle with Buffered peptone water	3.0	76	5.5 x 12	140 x 305	36	1080	Cs/100 (10x10)
KSS-61315-DE	Sponge on handle with DE-Neutralizing buffer with gloves	3.0	76	5.5 x 12	140 x 305	36	1080	Cs/100 (10x10)
KSS-61315-LT	Sponge on handle with Lethen broth with gloves	3.0	76	5.5 x 12	140 x 305	36	1080	Cs/100 (10x10)
KSS-61315-NE	Sponge on handle with Neutralizing buffer with gloves	3.0	76	5.5 x 12	140 x 305	36	1080	Cs/100 (10x10)
KSS-61315-PW	Sponge on handle with Buffered peptone water with gloves	3.0	76	5.5 x 12	140 x 305	36	1080	Cs/100 (10x10)

The SANI-STICK is designed to collect samples to detect the presence of microbiological contaminations on any surface. The SANI-STICK allows swabbing of hard-to-reach areas. These sponges on sticks are widely used in the food industry applications such as quality assurance procedures (QA/QC). The SANI-STICK kit is convenient and easy to use, and helps eliminate several time-consuming steps. This product comes in a TWIRL'EM sterile bag of 3 mil.in; 5.5 X 12 inches.



PRODUCT USAGE INSTRUCTIONS STEP BY STEP

- Step 1** Remove the tear-off strip and carefully take the sani-stick by the handle;
- Step 2** The wet sponge is already on the handle, swipe it on the determined surface;
- Step 3** Press on the bottom of the handle to gently release the sponge in the sterile sampling bag;
- Step 4** Twirl the bag 3 to 4 times and close it with the tabs;
- Step 5** Identify the sample on the write-on area with a permanent marker.





Filtra-Bag

FILTRA-BAG with Open Top - Clear

Code	Description	mils	micr.	in x in	mm x mm	oz	ml	Packaging
SCT07012A	For 400 series blenders	3.0	76	7 x 12	178 x 305	55	1650	Cs/400 (4x100)

FILTRA BAG with Tear-Off Protection Strip - Clear

Code	Description	mils	micr.	in x in	mm x mm	oz	ml	Packaging
SCT-6090A	For 400 series blenders	3.0	76	6 x 9	152 x 229	24	710	Cs/400 (4x100)
SCT-7012A	For 400 series blenders	3.0	76	7 x 12	178 x 305	55	1650	Cs/400 (4x100)
SCT-1015A	For 3500 series blenders	3.0	76	10 x 15	254 x 381	92	2720	Cs/200 (2x100)
SCT-1515A	For 3500 series blenders	3.0	76	15 x 15	381 x 381	138	4000	Cs/200 (2x100)
SCT-1520A	For 3500 series blenders	3.0	76	15 x 20	381 x 508	405	12L	Cs/200 (2x100)

FILTRA BAG with - Safety Tabs - Clear - Closure with 1 round wire & 1 flat wire

Code	Description	mils	micr.	in x in	mm x mm	oz	ml	Packaging
EFT-6090A	For 400 series blenders	3.0	76	6 x 9	152 x 229	24	710	Cs/400 (4x100)
EFT-7012A	For 400 series blenders	3.0	76	7 x 12	178 x 305	55	1650	Cs/400 (4x100)
EFT-1015A	For 3500 series blenders	3.0	76	10 x 15	254 x 381	92	2720	Cs/200 (2x100)
EFT-1515A	For 3500 series blenders	3.0	76	15 x 15	381 x 381	138	4000	Cs/200 (2x100)
EFT-1520A	For 3500 series blenders	3.0	76	15 x 20	381 x 508	405	12L	Cs/200 (2x100)

Labplas FILTRA-BAG blender bags are designed to simplify taking an aliquot when working with samples which contain large amounts of residue and/or semi-solid/solid substances. When lacing an aliquot onto growth media, it's very important that the volume of the aliquot be accurate and that it be free of solid particles. This prevents pipette blockage as well as uneven plate distribution.

- Polyethylene terephthalate (PET)/Polyethylene outer shell which practically eliminates the possibility of piercing the bag wall during blending;
- Filter membrane with 1840 holes per square inch with a pore size of 330 microns for optimal bacterial flow between compartments during blending.

PRODUCT USAGE INSTRUCTIONS STEP BY STEP

- Step 1* Insert the solid sample on the printed side of the FILTRA-BAG;
- Step 2* Run the bag through a complete blender cycle;
- Step 3* Insert the pipette on the clear side of the bag and collect the aliquot.





Secure-T

SECURE-T with Tear-Off Protection Strip - Clear

Code	Description	mils	micr.	in x in	mm x mm	oz	ml	Packaging
SCL-4060	For 80 series blenders	3.0	76	4 x 6	102 x 152	7	205	Cs/1000 (4x250)
SCL-5512	For 400 series blenders	3.0	76	5.5 x 12	140 x 305	36	1080	Cs/1000 (2x500)
SCL-7012	For 400 series blenders	3.0	76	7 x 12	178 x 305	55	1650	Cs/1000 (4x250)
SCL47012	For 400 series blenders	4.0	101	7 x 12	178 x 305	55	1650	Cs/1000 (4x250)
SCL41214	For 3500 series blenders	4.0	101	12 x 14	305 x 356	151	4.5L	Cs/500 (2x250)
SCL41218	For 3500 series blenders	4.0	101	12 x 18	305 x 457	228	6.75L	Cs/250
SCL-1520	For 3500 series blenders	3.0	76	15 x 20	381 x 508	405	12L	Cs/500 (2x250)
SCL41520	For 3500 series blenders	4.0	101	15 x 20	381 x 508	405	12L	Cs/500 (2x250)

SECURE-T with Tear-Off Protection Strip - Printed

Code	Description	mils	micr.	in x in	mm x mm	oz	ml	Packaging
SCR-7012	For 400 series blenders	3.0	76	7 x 12	178 x 305	55	1650	Cs/1000 (4x250)

BLENDER BAG with Open Top - Clear

Code	Description	mils	micr.	in x in	mm x mm	oz	ml	Packaging
SCL07012	For 400 series blenders	3.0	76	7 x 12	178 x 305	55	1650	Cs/1000 (4x250)
SCL01520	For 3500 series blenders	3.0	76	15 x 20	381 x 508	405	12L	Cs/500 (2x250)

BLENDER BAG with Open Top - Printed

Code	Description	mils	micr.	in x in	mm x mm	oz	ml	Packaging
SCR07012	For 400 series blenders	3.0	76	7 x 12	178 x 305	55	1650	Cs/1000 (4x250)

The SECURE-T product is made to handle the most robust blending applications. SECURE-T bags are available for all sizes of blender.

- Virgin polyethylene tubing extruded at temperatures ranging from 220°C to 240°C which guarantees internal sterility;
- Open bags are gamma irradiated;
- Maximum bag mouth opening to facilitate insertion of sample;
- Sterility certificate in every box which eliminates the need to call for documentation;
- Tear-off top which ensures internal sterility right up until the time of use (except for open bags).

Accessories

Labplas offers a full line of essential accessories to complement the SECURE-T product line. Our accessories are designed to simplify sample processing and increase efficiency in the lab.



Labrack

The LABRACK allows for sample batch preparation prior to blending, as well as sample storage after the blending.

- Made of 100% stainless steel;
- Stores up to 10 - 400 series blender bags;
- Rubber feet to keep it stable on counter tops;
- Bottom basin can easily hold 400ml of liquid;
- Fits in most incubators;
- Autoclavable.

Product code: SA4-7012

Work Station

Designed for the 400 series blender bags and allows the lab technician to easily access the sample without the need to hold the bag open with one hand while taking the aliquot with the other.

- Made of Polycarbonate plastic;
- Exceptionally strong, transparent and flexible.

Product code: SA1-7012



Closure Clips

These are used in conjunction with the LABRACK or on their own to temporarily close the bag and store the samples

- Available in 3 sizes for blender 80, 400 and 3500 series;
- Sold in packs of 10 units.

Product code: SA2-4060 (80 series)
SA2-7012 (400 series)
SA2-1520 (3500 series)

Customization and Private Branding

We understand that the customers sometimes have very specific needs and for this reason Labplas offers the possibility to customize your bags. Flexibility being one of our strengths, we are always open to work with you on creating a new product that will meet your requirements.



Special measurements

- Thickness of 2.5, 3.0, 3.5 or 4 mil.in or more;
- Minimum width of 3 inches, no maximum;
- Minimum length of 5 inches, no maximum.

Printing of your logo and special instructions

Create brand awareness by printing your logo on the bags! Let us know your specifics and we will create a unique bag for your needs.

- Two-color limitation.



Special Kits and Insertion

Labplas offers the option of customized insertions such as:

- Wet sponges (your unique formula of media);
- Sterile objects such as spoons, swabs, clippers, etc.;
- Pre-rolled bags for diagnostic kits;
- Cotton tissue with several choices of media for analysis;
- Boot swabs with several choices of media for analysis;
- Any other object you would like to be inserted in your bags.

Custom Packaging

- Units per box ;
- Clean-room special packaging ;
- Units of sponges or special insert per bag.

Minimum quantity to be determined upon quote of product.

ProlabScientific

TWIRL'EM®

TWIRL'EM®
EC LO

SECURE-T®

FILTRA-BAG®

Sani-Stick

SANI SPONGE

Contact us for all your sampling needs.

2213 Le Chatelier Street | Laval | Quebec | Canada | H7L 5B3

Tel: 1.450.682.5118 | Fax: 1.450.682.6468 | info@prolabscientific.com | www.prolabscientific.com

